

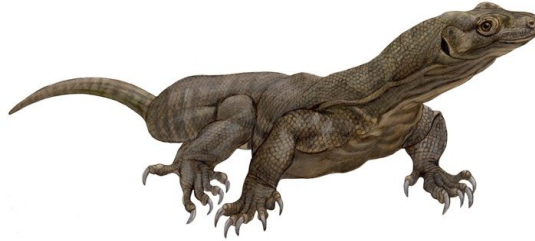
Cool Coverings

Fins, feathers, spines, and scales are adaptations that help provide protection for these aquarium residents!



Northern Bobwhite

Feathers are excellent for insulation. In the winter, birds puff out their feathers for a thicker layer.



Komodo Dragon

Look at the scratches on the dragon exhibit windows. These come from the dragons' rough scales rubbing against the glass.



Timber Rattlesnake

All snakes have scales, but some of them are keeled, meaning raised in the middle.



Tomistoma

Crocodylians have bony plates within their scales as an extra layer of protection.



Striped Burrfish

This fish's spines look unappetizing to hungry predators, especially after the fish inflates its body in defense.



Lobster

Lobsters molt their hard exoskeleton and then reform a new one in order to grow.



VIRGINIA
AQUARIUM
& MARINE SCIENCE CENTER